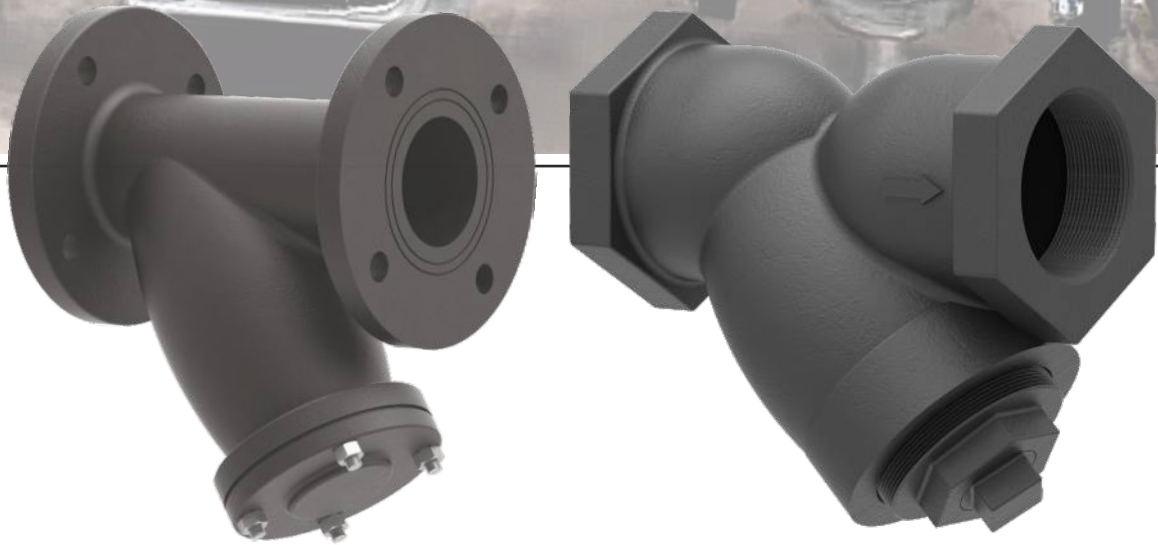


LFS & LTS

Y-Type Cast Iron Strainer



MAIN FEATURES

- Flanged ends as (PN16 / PN10 / ANSI 150 optional) as per BS 10 Table 'F'
- Stainless Steel Strainer with AISI 304, Ø3mm Perforation is guided in body and cover.
- Efficient in performance due to large screening area.
- Streamlined body contours due to minimum pressure drop inside the body.
- Y-Type Cast Iron Strainer suitable for clean water only.

Test Pressure (Hydrostatic) Shell : 24 bar (350 psi).

Maximum Working Pressure 16 bar (230 psi).

Maximum Working Temperature 90°C

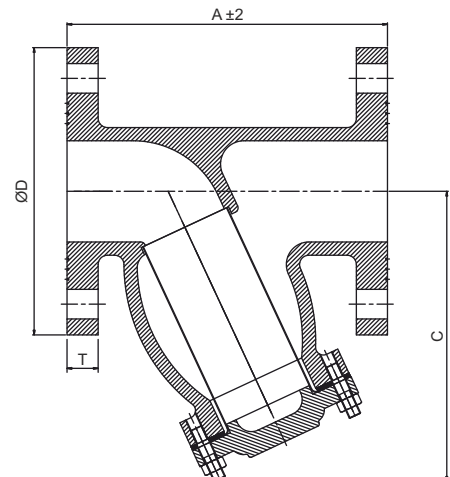
MATERIAL OF CONSTRUCTION

Part Name	Material
Main Body	Cast Iron FG.200
Flange	Cast Iron FG.200
Strainer	AISI 304
Gasket	NBR
Stud	M.S. Plated
Nut	M.S. Plated



SIZE / DIMENSIONS

Model	Size (mm)	Size (Inches)	L ±2	T	C	D
LFS20	50	2	180	19	175	165
LFS25	65	2-1/2	206	19	180	184
LFS30	80	3	260	19	238	203
LFS40	100	4	295	22	250	229
LFS60	150	6	385	25.4	320	305
LFS80	200	8	525	28.6	395	368
LFS100	250	10	700	28.6	515	432
LFS120	300	12	750	31.8	570	489



MAIN FEATURES

- Threaded Ends BSP Standard / NPT Optional.
- Stainless Steel (AISI 304, Ø3mm Perforation) Strainer is guided in Body and Cap.
- Large screening area makes the strainer efficient in performance.
- Minimum pressure drop inside the body due to streamlined body contours.
- Y-Type Cast Iron Strainer suitable for clean water only.

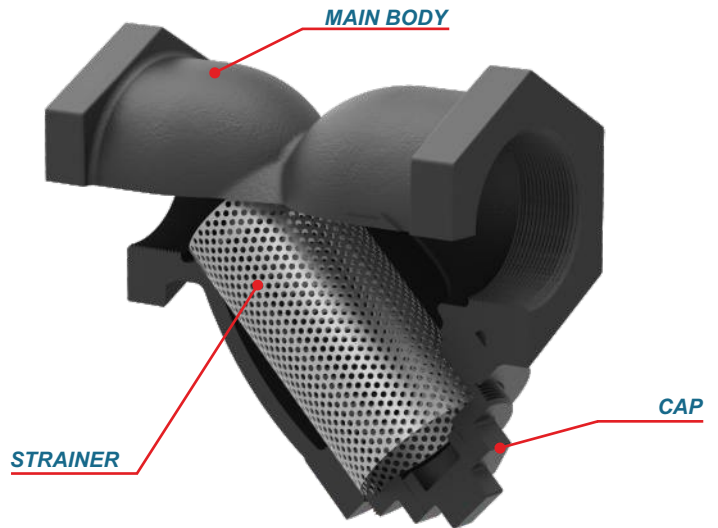
Test Pressure (Hydrostatic) Shell : 24 bar (350 psi).

Maximum Working Pressure 27.5 bar (400 psi for cold water only).

Maximum Working Temperature 90°C.

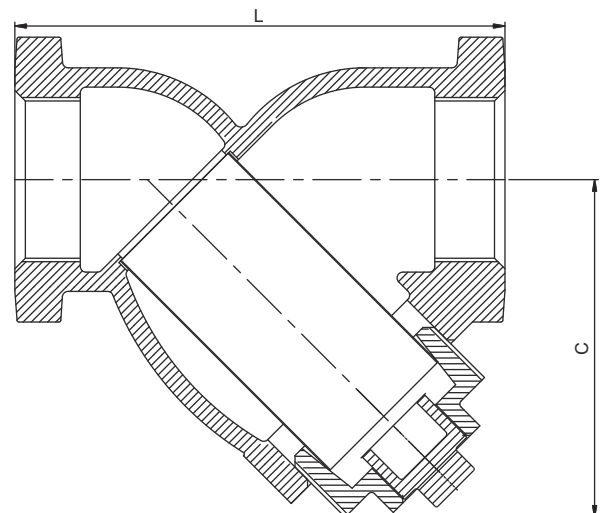
MATERIAL OF CONSTRUCTION

Part Name	Material
Main Body	Cast Iron FG.200
Strainer	AISI 304
Cap	Cast Iron FG.200



SIZE / DIMENSIONS

Model	Size (mm)	Size (Inches)	L	C
LTS02T	6	1/4	68	55
LTS03T	9	3/8	68	55
LTS05T	13	1/2	77	62
LTS07T	19	3/4	104	77
LTS10T	25	1	124	92
LTS12T	32	1-1/4	131	99
LTS15T	40	1-1/2	147	104
LTS20T	50	2	188	140
LTS25T	65	2-1/2	228	147
LTS30T	80	3	255	175



LUBI INDUSTRIES LLP

Near Kalyan Mills, Naroda Road, Ahmedabad-380 025, INDIA.

Phone : +91 - 79 - 61700100, Fax No. :+91 - 79 - 61700399.

Sales Enquiries: indsales@lubipumps.com, expsales@lubipumps.com

www.lubipumps.com

Product Improvement is a continuous process at 'LUBI'. The data given in this publication is therefore subject to revision.

00.00.091120.0203



ISO 9001



ISO 14001

Customer Care Number : 9824200800